

# FOWLER

## HIRE & SALES LTD



2017-18

## HIRE PRICE LIST



## POWER TOOLS - EQUIPMENT SMALL PLANT - GARDEN MACHINERY



**YOUR LOCAL INDEPENDANT HIRE CENTRE**

**01308 424269**

[www.fowlertools.co.uk](http://www.fowlertools.co.uk) | St. Andrew's Industrial Estate, Bridport DT6 3EX

- 3 Service & Repairs
- 4 Sales
- 5 Compaction Equipment, Concrete & Surface Preparation, Tile, Block & Stone Splitters.
- 6 Chasing & Cutting, Concrete Saw
- 7 Fixings Tools, Hammers & Breakers, Compressors
- 8 Drills, Masonry Drill Bits, Saws.
- 9 Woodworking, Pumps, Welders.
- 10 Cleaning Equipment & Decorating.
- 11 Heating & Drying, Site Power & Lighting.
- 12 Ladders, Scaffolds, Platforms & Hoists.
- 15 Props, Surveying, Plumbing.
- 16 Site Safety, Hand Tools.
- 18 Gardening
- 20 Chain Saws, Cordless Garden Tools
- 21 Chippers & Shredders
- 22 Access Platforms
- 26 Lifting
- 27 Mini Excavators 360° Slew.
- 31 Loaders
- 34 Dumpers & Barrows
- 36 Shifta 4.5m Conveyor

## Why hire makes sense

### Flexibility

You can hire by the day, week or weekend. Delivery service is available for larger items.

### Free advice when you hire

Our expert staff can advise you on the correct tools for the job. Safety leaflets and personal protection kits are available with all hire equipment.

### Save money

No capital tied up unnecessarily. No repair or maintenance costs.

### Save time

The right tools for the job means less valuable time wasted.

### Hiring is an opportunity to try out equipment before buying

Ask for details. We have the right tools and equipment for all your needs, at competitive prices.

## Safety check list

- Ask for any safety information leaflets.
- Our staff will offer expert guidance on all equipment hired.
- Use manufacturers guide book if available.
- For electrical work outside, use a transformer to reduce voltage.
- Always use a Residual Current Device 'RCD' adaptor plugged into a wall socket.
- Choose 110 volt equipment.
- Use personal protection items.



Goggles



Gloves



Hard Hat



Clothing



Ear Defenders



Face Shield



Safety Harness



Boots



Mask



Respirator



Welding Mask

**PLEASE NOTE: A deposit and form of identification (eg. driving licence) will be required. All prices shown exclude VAT, delivery, blades, drill bits, sharpening charges for steels, damage caused by neglect or accident, and cleaning of plant.**

*Equipment is hired on the terms printed on the reverse of our hire contract. These are approved by the Hire Association of Europe of which we are a member.*

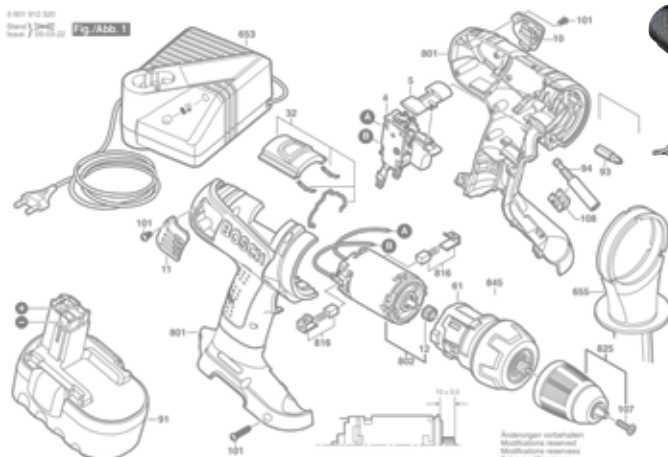


# Service and Repairs

**We can repair your existing equipment, we have direct spares supply from the majority of power tool manufacturers...**

Such as Black & Decker, Bosch, Draper, DeWalt, Hitachi, Makita, Metabo, Numatic, Skil, Dremel, Briggs & Stratton, Echo, Honda, Trend, Husqvarna, Stihl & Viking.

We undertake the repair and service of most portable power tools and equipment, and offer 5 day turnaround on most repairs (this may depend on availability and delivery of requested spare parts from our suppliers), saw blades and cutters sharpened, saw chain supplied and fitted while you wait.



- Service & Repairs
- All Garden Machinery Including Ride-On Mowers
- Stihl / Viking Warranty Agents
- Chain Sharpening
- Bar Grinding

**01308 424269**

# Sales

## Power and Hand Tool Specialists



### Spares and Consumables for most makes

- Bosch, Dremel, DeWalt, Metabo, Makita power tools
- Stihl chainsaws, brush cutters, hedge trimmers, disc cutters, power washers. Full range of Stihl products.
- Viking garden machinery, mowers, cultivators etc.
- Trend router centre with a large range of cutters
- Air tools, fittings & compressors
- Cement mixers
- Bosch diamond blades & core drills
- Abrasive cutting & grinding discs (all sizes)
- Towers, ladders, steps & platforms
- Generators, transformers, plugs, sockets, leads & splitter boxes
- Welders, rods, wire & accessories
- Bosch accessories including drill bits, HSS, flat bits, masonry bits (up to 1m long), core bits, hole saws, circular, jig & sabre saw blades
- Nuts, bolts, washers, screws, fixing bolts & chemical fixings
- Fire extinguishers & blankets
- Site safety signs, fire signs, health & safety signs, also made to order
- Safety & protection equipment including gloves, goggles, helmets, respirators & safety harnesses
- Lawn mowers, strimmers, chippers, shredders, hand tools
- Contractors tools, spades, shovels, forks, rakes, pick axes, lights, cones, handles and much, much more...



## Ex-Display / Ex-Demo Sales



We also have many special offers and ex-demo items available to buy direct or on ebay.  
Click the links from our website [www.fowlertools.co.uk](http://www.fowlertools.co.uk) or visit [www.ebay.co.uk/usr/fowlerhire](http://www.ebay.co.uk/usr/fowlerhire)



## Calor Gas Sales

We are stockists of BUTANE, PROPANE, PATIO and also FORK LIFT GAS. We also sell GAS BBQs, SPACE & CABINET HEATERS.





# Compaction, Surface Prep & Splitters

## Compaction Equipment

Item	Day	Ext Day	W-End	Week
<b>Compactor plate</b> medium (petrol) 300mm	20.90	7.60	24.70	38.00
<b>Compactor plate</b> heavy duty (petrol) 400mm	22.00	8.00	26.00	40.00
<b>Trench rammer</b> (2 stroke) 170mm	22.00	8.00	26.00	40.00
<b>Roller</b> single drum (petrol) 151kg, 69cm	26.00	10.40	31.20	52.00
<b>Roller</b> ride on 1600kg, 80cm	52.00	26.00	65.00	130.00
<b>Roller</b> ride on 2350kg, 120cm	60.00	30.00	75.00	150.00



Compactor Plate

## Concrete and Surface Preparation

Item	Day	Ext Day	W-End	Week
<b>Cement mixer</b> tip up (240v & 110v)	14.40	4.80	16.80	24.00
<b>Cement mixer</b> tip up (petrol)	15.60	5.20	18.20	26.00
<b>Poker vibrator</b> (petrol) 45mm	24.20	8.80	28.60	44.00
<b>Poker vibrator</b> (110v) 50mm	24.20	8.80	28.60	44.00
<b>Power float</b> (petrol)	38.40	12.80	44.80	64.00
<b>Beam screeder</b> (petrol) 5.2m	45.60	15.20	53.20	76.00
<b>One man screeder</b> (petrol) 2.45m	42.00	14.00	49.00	70.00
<b>Floor grinder</b> (110v)	28.00	11.20	33.60	56.00
<b>Floor tile stripper</b> (110v)	32.50	13.00	39.00	65.00
<b>Wall surface preparation grinder</b> (110v)	27.60	9.20	32.20	46.00

**All prices shown are subject to VAT**



Cement Mixer

## Tile, Block and Stone Splitters

Item	Day	Ext Day	W-End	Week
<b>Tile cutter</b> wall	10.00	4.00	12.00	20.00
<b>Tile cutter</b> floor	12.00	4.80	14.40	24.00
<b>Paving / brick splitter</b>	17.60	6.40	20.80	32.00
<b>Block splitter</b> 10"	22.00	8.00	26.00	40.00
<b>Hydraulic stone splitter</b> (diesel)	80.00	40.00	100.00	200.00



Towable Hydraulic Stone Splitter

Maximum aperture 600mm x 300mm



Block Splitter



# Chasing & Cutting

## Chasing and Cutting

Item	Day	Ext Day	W-End	Week
Mini grinder (110v) 115mm	9.00	3.00	10.50	15.00
9" Angle grinder (110v) 230mm	12.00	4.00	14.00	20.00
Cut-off saw-12" (110v) 300mm	16.00	6.40	19.20	32.00
Road saw 18" (petrol) 450mm	37.50	15.00	45.00	75.00
Mortar saw TCT blade (110v)	38.00	15.20	45.60	76.00
Wall chaser 5" double diamond disc (110v) 125mm	20.00	8.00	24.00	40.00
Diamond tile saw bench (110v/240v)	17.00	6.80	20.40	34.00
Cut-off saw 12" (2 stroke) 300mm	22.80	7.60	26.60	38.00
Pressurised water container (for wet cutting)*	4.50	1.50	5.25	7.50



Diamond Blade wear	per mm	min cost
125mm general purpose	20.00	10.00
300mm general purpose	30.00	15.00
450mm concrete / tarmac	60.00	30.00



\*  
Dry cutting can be bad for your health -  
We advise the use of wet cutting &  
minimum P2 Dust Mask

## Concrete Chain Saw



With Diamond Chain. Will cut through 400mm thick walls  
of brick, block, reinforced concrete, concrete cylinders &  
beams!!!



Wet Cut - Water  
Supply Required

Item	Day	Ext Day	W-End	Week
Concrete chain saw 400mm (16")	56.10	20.40	66.30	102.00
Chain wear = £96 per mm - Minimum charge of £48 Fuel: 2 stroke Petrol				



# Fixings Tools, Breakers & Compressors

## Fixings Tools

Item	Day	Ext Day	W-End	Week
<b>Autofeed screw driver</b> 110v	19.20	6.40	22.40	32.00
<b>Gas nail gun</b> timber (first fix)	21.60	7.20	25.20	36.00
<b>Gas nail gun</b> (second fix)	21.60	7.20	25.20	36.00
<b>Floor board nailer</b>	16.00	6.40	19.20	32.00
<b>Staple tacker</b>	3.30	1.10	3.85	5.50
<b>Chemfix gun</b>	3.60	1.44	4.32	7.20

Gas, nails, screws, staples & chemical fix on sale



## Hammers and Breakers

Item	Day	Ext Day	W-End	Week
<b>Demolition hammer</b> 5 kilo (110v)	20.40	6.80	23.80	34.00
<b>Demolition hammer</b> 11 kilo (110v)	23.10	8.40	27.30	42.00
<b>Bosch hammer</b> 16 kilo (110v)	26.40	9.60	31.20	48.00
<b>Road breaker</b> 27 kilo (110v)	26.40	9.60	31.20	48.00
<b>Road breaker</b> hydraulic JCB (petrol)	37.40	13.60	44.20	68.00

Breaker steels £1.50 each, Hammer steels £1.30 each

Mounted breakers also available - See pages 28-30



**All prices shown are subject to VAT**

## Compressors

Item	Day	Ext Day	W-End	Week
<b>Compressor</b> workshop 5.7CFM, 25L (240v)	15.00	6.00	18.00	30.00
<b>Compressor</b> workshop 22CFM, 50L (petrol)	25.00	10.00	30.00	50.00
<b>Air hose</b>	1.80	0.60	2.10	3.00



Full range of compressors and air tools available to purchase



# Drills & Saws



## Drills

Item	Day	Ext Day	W-End	Week
<b>Rotary hammer cordless</b> (36v/sds plus)	22.00	8.80	26.40	44.00
<b>Rotary hammer</b> 2kilo (110v/sds plus)	15.00	5.00	17.50	25.00
<b>Rotary hammer</b> 4kilo (110v/sds plus)	17.60	6.40	20.80	32.00
<b>Rotary hammer</b> 5kilo (110v/sds max)	20.40	6.80	23.80	34.00
<b>Engineers drill</b> 2 speed $\frac{5}{8}$ " (110v)	16.80	5.60	19.60	28.00
<b>Angle drill</b> $\frac{5}{8}$ " (110v/240v)	15.00	5.00	17.50	25.00
<b>Diamond dry core drill</b> (110v)	22.00	8.80	26.40	44.00



Diamond Core wear	per mm	min cost
52mm	18.00	9.00
107mm	24.00	12.00
117mm	24.00	12.00
127mm	26.00	13.00
152mm	28.00	14.00



**Diamond cores also on sale**



## Masonry Drill Bits

Item	Day	Ext Day	W-End	Week
15-45mm	4.00	1.60	4.80	8.00

**Drill bits also on sale**



## Saws

Item	Day	Ext Day	W-End	Week
<b>Jig Saw</b> (110v/240v)	12.00	4.00	14.00	20.00
<b>Reciprocating saw</b> (240v/110v)	15.40	5.60	18.20	28.00
<b>Circular saw</b> (110v/240v) 150mm	15.40	5.60	18.20	28.00
<b>Circular saw</b> (110v) 230mm	16.50	6.00	19.50	30.00
<b>Multi tool</b> cut / sand (240v)	14.40	4.80	16.80	24.00
<b>Cross cut sliding mitre saw</b> 260mm (110v)	30.00	10.00	35.00	50.00

Depth cut 100mm

**Saw blades on sale**





# Woodworking, Pumps & Welders

## Woodworking

Item	Day	Ext Day	W-End	Week
<b>Multi tool</b> (240v) sanding & cutting	14.40	4.80	16.80	24.00
<b>Orbital sander</b> (240v)	12.00	4.00	14.00	20.00
<b>Random orbit sander</b> (240v)	13.20	4.40	15.40	22.00
<b>Belt sander</b> (240v/110v) 100mm	15.40	5.60	18.20	28.00
<b>Floor sander</b> (240v) 200mm	34.80	11.60	40.60	58.00
<b>Floor edger</b> (240v) 180mm	17.00	6.80	20.40	34.00
<b>Floor finishing sander</b> (240v)	34.80	11.60	40.60	58.00
<b>Wood plane</b> (240v) 75mm	15.60	5.20	18.20	26.00
<b>Router</b> (240v) 1/2"	16.80	5.60	19.60	28.00
<b>Work top jig</b>	14.00	5.60	16.80	28.00
<b>Sash cramps</b> 1.5m	8.00	1.60	8.00	8.00
<b>Sash cramps</b> 1.2m	5.50	1.10	5.50	5.50
<b>Floor cramps</b> (pair)	20.00	4.00	20.00	20.00



## Floor care products on sale



## Rustin's

- Plastic Floor Coating
- Acrylic Floor Coating
- Polyurethane Floor Coating
- Slip Resistant Floor Coating
- Floor Dye
- Wood Dye
- Floor Oil
- Laminated & Multi-Purpose Floor Shine



## Pumps

Item	Day	Ext Day	W-End	Week
<b>Submersible pump</b> (110v) 200 lpm	17.50	7.00	21.00	35.00
<b>Surface water/submersible</b> (240v)	17.50	7.00	21.00	35.00
<b>Diaphragm pump</b> 50mm (petrol) 190 lpm	27.00	9.00	31.50	45.00
<b>Trash pump</b> 50mm (petrol) 1200 lpm	24.75	9.00	29.25	45.00
<b>Fuel transfer pump</b> (240v)	21.00	7.00	24.50	35.00
All pumps supplied with 7 metre hose				
Extra 7 metre hose	3.00	1.20	3.60	6.00



## Welders

Item	Day	Ext Day	W-End	Week
<b>Mig welder</b> 130 amp	20.00	8.00	24.00	40.00
<b>Welder generator</b> 250amp (diesel)	44.00	16.00	52.00	80.00
Rods, wire and gas on sale				



All prices shown are subject to VAT

# Cleaning & Decorating

## Cleaning Equipment

Item	Day	Ext Day	W-End	Week
<b>Vacuum cleaner</b> dry/med (110v/240v) 15L	12.10	4.40	14.30	22.00
<b>Vacuum cleaner</b> wet & dry/large (110v) 40L	16.00	6.40	19.20	32.00
<b>Vacuum cleaner</b> wet & dry/indust (110v) 70L	17.50	7.00	21.00	35.00
<b>Vacuum cleaner M class</b> (110v/240v) 23L	16.00	6.40	19.20	32.00
<b>Carpet shampooer</b> (240v)	15.00	6.00	18.00	30.00
<b>Floor polisher / scrubber</b> industrial (240v)	18.70	6.80	22.10	34.00
<b>Pressure washer</b> cold/1500psi (240v)	25.20	8.40	29.40	42.00
<b>Pressure washer</b> cold/1500psi (petrol)	32.00	12.80	38.40	64.00
<b>Pressure washer</b> hot/1700psi (240v / diesel)	46.20	16.80	54.60	84.00
<b>Drain cleaning attachment</b> (PET. Machine)	20.00	8.00	24.00	40.00
Detergent & shampoo on sale				
<b>Steam cleaner</b> (240v) Brushes and pads extra	24.00	8.00	28.00	40.00
<b>Powered weed brush</b> (petrol)	40.00	16.00	48.00	80.00



**Carpet Shampooer**



**Vacuum Cleaner M Class**

Conforms to EU standard EN/IEC 60335-2-69  
Ideal for dust extraction



**Pressure washer (petrol)**



**Hot water high pressure cleaners.**  
High pressure cleaners clean even better with hot water at the same amount of pressure.



**All prices shown are subject to VAT**

## Decorating

Item	Day	Ext Day	W-End	Week
<b>Wallpaper stripper</b> (240v)	12.65	4.60	14.95	23.00
<b>Spiked roller</b> for use with above	1.50	0.60	1.80	3.00

# Heating, Drying, Site Power & Lighting

## Heating and Drying

Dehumidifier



Air Moving Dust Filter Fan



Item	Day	Ext Day	W-End	Week
Dehumidifier compact (240v)	24.00	8.00	28.00	40.00
Dehumidifier BD1000 (240v/110v)	38.00	15.20	45.60	76.00
Air moving fan	15.40	5.60	18.20	28.00
Air moving dust filter fan (filters extra)	15.40	5.60	18.20	28.00
Fume extractor / air blower (110v)	24.20	8.80	28.60	44.00
Ducting 10m for fume extractor	7.00	2.80	8.40	14.00
Space heater 125,000btu (propane)	20.90	7.60	24.70	38.00
Fan heater 3kw (240v)	9.60	3.20	11.20	16.00
Radiant heater 3kw (240v)	18.70	6.80	22.10	34.00
Calor Propane & Butane gas on sale				



Space Heater



Air Moving Fan



Fan Heater

## Site Power and Lighting



Generator

Item	Day	Ext Day	W-End	Week
Generator 2.4kva (petrol)	18.00	7.20	21.60	36.00
Generator 3.5kva (petrol)	24.00	9.60	28.80	48.00
Generator 5kva (diesel)	44.00	16.00	52.00	80.00
Generator 6kva Silenced (diesel)	50.00	20.00	60.00	100.00
Transformer 3.3kva	3.60	1.20	4.20	6.00
Extension leads (240v)	3.00	1.20	3.60	6.00
Extension leads (110v)	3.00	1.20	3.60	6.00
Distribution box (110v)	3.00	1.20	3.60	6.00
Floodlight 500w (110v)	5.00	2.00	6.00	10.00



Transformer



Distribution Box



Generator 6kva

# Ladders, Scaffolds, Platforms & Hoists

## Ladders (Aluminium)

Item	Day	Ext Day	W-End	Week
Extension ladder 6.3m (2x3.4) class 1	16.80	5.60	19.60	28.00
Extension ladder 8.7m (3x3.5) class 1	21.00	7.00	24.50	35.00
Roof ladder 3.5m class 1	19.20	6.40	22.40	32.00
Roof ladder 5.1m class 1	19.20	6.40	22.40	32.00
Step ladder 1.8m (aluminium) class 1	9.00	3.00	10.50	15.00

## Alloy Towers - Double / Single Width

All towers are complete with locking adjustable height caster wheels, internal ladders, handrails, toe boards and platforms

**Alloy Towers - Double Width** 1.4m x 1.8m (4'8" x 6'0") with ladders

Item	Day	Ext Day	W-End	Week
2.4m Double width alumin.tower	27.00	10.80	32.40	54.00
3.4m Double width alumin.tower	30.00	12.00	36.00	60.00
4.4m Double width alumin.tower	33.50	13.40	40.20	67.00
5.4m Double width alumin.tower	37.00	14.80	46.40	74.00
6.4m Double width alumin.tower	40.00	16.00	48.00	80.00
7.4m Double width alumin.tower	43.50	17.40	52.20	87.00
8.4m Double width alumin.tower	47.00	18.80	56.40	94.00
9.4m Double width alumin.tower	51.00	20.40	61.20	102.00
10.4m Double width alumin.tower	55.00	22.00	66.00	110.00

**Alloy Towers - Single Width** 0.885m x 1.8m (2'11" x 6'0") with ladders

Item	Day	Ext Day	W-End	Week
2.2m Single width alumin.tower	27.00	10.80	32.40	54.00
3.2m Single width alumin.tower	30.00	12.00	36.00	60.00
4.2m Single width alumin tower	33.50	13.40	40.00	67.00
5.2m Single width alumin tower	37.00	14.80	44.40	74.00
6.2m Single width alumin tower	40.00	16.00	48.00	80.00
7.2m Single width alumin tower	43.50	17.40	52.20	87.00
8.2m Single width alumin tower	47.00	18.80	56.40	94.00

Please note, measurements shown above are platform heights.

**All prices shown are subject to VAT**





# Scaffolds, Platforms & Hoists

## Stair Scaffold (Aluminium)

This aluminium stair scaffold can be adjusted to fit most stair cases.  
1.2m x 0.7m wide. 2/3m adjustable height, with walk through frame.

Item	Day	Ext Day	W-End	Week
Stair scaffold	35.00	14.00	42.00	70.00

## Decorators Platform (Aluminium)

Wheeled aluminium platform, ideal for indoor decorating and repairs.  
1.6m x 0.72m wide. Max platform height 0.91m

Item	Day	Ext Day	W-End	Week
Decorators platform	18.00	6.00	21.00	30.00

## Podium (Aluminium)

Folding aluminium industrial podium with wheels  
1.1m x 0.665m base area. Max platform height 1.0m, Overall height 1.78m

Item	Day	Ext Day	W-End	Week
Podium	18.00	6.00	21.00	30.00



Podium



Winch Tirfor



Stair Scaffold

Item	Day	Ext Day	W-End	Week
Skip loading ramp 3m x 0.5m	9.90	3.60	11.70	18.00
Youngman staging 3.6m x 0.6m	8.00	3.20	9.60	16.00
Youngman staging 4.8m x 0.6m	9.00	3.60	10.80	18.00
Youngman staging 5.9m x 0.6m	10.00	4.00	12.00	20.00
Youngman staging 4.8m x 0.45m	9.00	3.60	10.80	18.00
Handrail for youngman staging	4.90	1.96	5.88	9.80
Scaffold boards 2.4m, 3.0m, 3.9m	1.65	0.33	1.65	1.65
Trestle adjustable no.1 0.55m - 0.7m	2.20	0.88	2.64	4.40
Trestle adjustable no.3 1.1m - 1.74m	2.20	0.88	2.64	4.40
Plaster board lifter (see page 26)	26.40	9.60	31.20	48.00
Rubbish shute per metre	2.40	0.80	2.80	4.00
Hopper head	2.75	1.10	3.30	5.50
Scaffold hoist 200kg (110v)	27.50	11.00	33.00	55.00
Chain blocks 1500kg (manual)	12.50	5.00	15.00	25.00
Chain blocks 2000kg (manual)	14.00	5.60	16.80	28.00
Winch tirfor 3ton	20.00	8.00	24.00	40.00
Engine crane 15cwt	24.00	8.00	28.00	40.00



Trestle

## Professional Workwear on Sale



## High-Vis Clothing and Safety Helmets



## Safety Boots on Sale

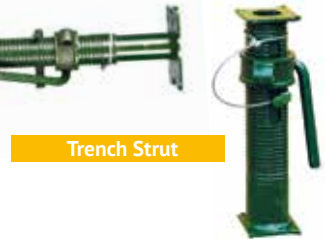
Large selection of sizes and styles available in stock



# Props, Surveying & Plumbing

## Props

Item	Day	Ext Day	W-End	Week
Acrow prop size 0 (1.04m to 1.83m)	3.00	-----	3.00	3.00
Acrow prop size 1 (1.75m to 3.12m)	3.00	-----	3.00	3.00
Acrow prop size 3 (2.59m to 3.96m)	3.00	-----	3.00	3.00
Trench struts	3.00	-----	3.00	3.00
Strong boy support attachment	3.50	1.40	4.20	7.00



## Surveying

Item	Day	Ext Day	W-End	Week
Site level set (auto)	24.00	9.60	28.80	48.00
Rotating laser site level	32.50	13.00	39.00	65.00
Measuring wheel	13.20	5.28	15.84	26.40
Pipe detector (cat)	20.00	8.00	24.00	40.00
Pipe detector (genny)	20.00	8.00	24.00	40.00
Inspection camera (cavities etc.)	19.00	7.60	22.80	38.00
Metal detector	17.60	6.40	20.80	32.00



## Plumbing

Item	Day	Ext Day	W-End	Week
Pipe freezer kit (110v)	34.80	11.60	40.60	58.00
Pipe threading machine (½" to 2") (110v)	37.40	13.60	46.24	68.00
Plumbers vice	7.50	3.00	9.00	15.00
Drain rods 18m set	15.00	5.00	17.50	25.00
Gully scoop	7.00	2.80	8.40	14.00



**All prices shown are subject to VAT**

# Site Safety & Hand Tools

## Site Safety



Road, Fire & Safety Signs on Sale



Item	Day	Ext Day	W-End	Week
Road barrier 2m x 1m high	6.00	-----	6.00	6.00
Security fence panel 3.5m x 2m high	2.20	-----	2.20	2.20
Road signs	4.60	-----	4.60	4.60
Road cone 0.76m high	1.20	-----	1.20	1.20

## Hand Tools

Item	Day	Ext Day	W-End	Week
Bolt croppers 450mm	9.00	3.60	10.80	18.00
Bolt croppers 600mm	10.00	4.00	12.00	20.00
Bolt croppers 1.1m	15.00	6.00	18.00	30.00
Carpet stretcher	7.00	2.80	8.40	14.00
Drain rods (18m set)	15.00	5.00	17.50	25.00
Gully scoop	7.00	2.80	8.40	14.00
Flue brush (9m set)	12.00	4.80	14.40	24.00
Sack truck	4.95	1.80	5.85	9.00
Pallet truck 2000kg	17.50	7.00	21.00	35.00
Engine crane 15cwt - 1000kg	24.00	8.00	28.00	40.00
Roofers torch (propane)	10.00	4.00	12.00	20.00
Tyroleam machine	9.00	3.60	10.80	18.00
Wheelbarrows	5.00	-----	5.00	5.00







# BOSCH

**Fowlers has the special status of Bosch System Specialist (BSS) given only to a few stores across the UK.**

This enables us to offer an excellent range of both Professional Tools and Accessories making us the leading stockist in the area. The dedicated Bosch space offers a wide choice at competitive prices, making it easy to find the product you require.

As a Bosch System Specialist we are able to offer exclusive deals.

Our well trained staff work very closely with Bosch to be able to offer specialist technical advice and keep updated on new products as they become available.

**We are Bosch warranty repair agents and carry out repairs in our own workshop**

**Ask in store about the Bosch Wireless Charging System**



# Gardening

## Turf Cutter



Item	Day	Ext Day	W-End	Week
Hedge trimmer 600mm cordless (36v battery)	25.20	8.40	29.40	42.00
Hedge trimmer 600mm (2 stroke)	25.20	8.40	29.40	42.00
Long reach hedge trimmer (2 stroke)	31.20	10.40	36.40	52.00
Lawn mower 460mm (petrol)	20.00	8.00	24.00	40.00
Flail mower 600mm (petrol)	44.00	16.00	52.00	80.00
Brush mower 650mm (petrol)	44.00	16.00	52.00	80.00
Brush cutter (2 stroke)	27.00	9.00	31.50	45.00
Leaf blower vac (2 stroke)	22.80	7.60	26.60	38.00
Lawn scarifier (petrol)	34.10	12.40	40.30	62.00
Lawn scarifier (240v)	18.70	6.80	22.10	34.00
Lawn aerator (petrol)	44.00	16.00	52.00	80.00
Turf cutter (petrol)	35.75	13.00	42.25	65.00
Rotavator C8hp (petrol)	36.50	14.60	43.80	73.00
Tiller 5hp (petrol)	30.00	12.00	36.00	60.00

## Hedge Trimmer



## Wood chipper 3" (petrol)



## Post Puller



## Powered Weed Brush





# Gardening

Item	Day	Ext Day	W-End	Week
Power harrow C10 (petrol)	44.00	16.00	52.00	80.00
Post puller (hand hydraulic)	48.00	19.20	57.60	96.00
Post hole borer hand	5.00	2.00	6.00	10.00
Post hole borer 200mm (2 stroke)	27.00	10.80	32.40	54.00
Post driver hand	5.00	2.00	6.00	10.00
Pole pruner	5.50	2.20	6.60	11.00
Garden roller	6.00	2.40	7.20	12.00
Fertilizer spreader	6.00	2.40	7.20	12.00
Shredder/chipper 32mm (240v)	24.00	9.60	28.80	48.00
Wood chipper 75mm (petrol)	48.00	19.20	57.60	96.00
Towable shredder 160mm (petrol) (see page 21)	108.00	54.00	135.00	270.00
Tracked chipper 160mm (diesel) (see page 21)	164.50	70.00	199.50	350.00
Stump grinder (petrol)	44.00	16.00	52.00	80.00
Stump grinder tracked mounted	104.50	82.50	158.40	330.00
Log splitter (240v)	38.00	15.20	45.60	76.00
Powered weed brush (petrol)	40.00	16.00	48.00	80.00
Skip loading ramp 3m x 0.5m	9.90	3.60	11.70	18.00

## Skip Loading Ramp



All prices shown are subject to VAT

See page  
20 for  
Chainsaws  
and  
Cordless  
Garden Tools

## Brush Cutter



## Rotavator



## Brush Mower (petrol)

Will cut long grass and  
scrub down to 50mm



# Gardening

When you choose STIHL, you're investing in one of the most carefully-engineered, high-performing and durable range of power tools available. So it deserves the best fuel.

MotoMix® is a fuel created especially for STIHL 2-stroke engine power tools. It ensures the very best performance and lubrication. So, whether you're a professional user, carrying out heavy duty jobs, or an occasional user at home - it will help your tools perform better, for longer.

## Key benefits

- Convenience: pre-mixed, so it's ready to go whenever you are
- Higher performing: power efficiency with improved fuel economy
- Better lubricating: high octane fuel mixture offers excellent protection for your tools
- Longer lasting: being ethanol-free means it lasts longer and is stable for up to two years after opening
- Available in 1L and 5L containers as standard.



**Stihl MotoMix®  
on Sale**



## Chain Saws

Item	Day	Ext D	W-End	Week
<b>Chain saw 14" / 350mm (240v) inc P P Set</b>	30.00	10.00	35.00	50.00
<b>Chain saw 16" / 400mm (2 stroke) inc P P Set</b>	40.20	13.40	46.90	67.00
<b>Chain Saw Personal Protection Set</b>	7.50	3.00	9.00	15.00
<b>Pole chain saw cordless (36v battery) inc P P Set</b>	44.40	14.80	51.80	74.00
<b>Chain saw 14" / 350mm cordless (36v battery) inc P P Set</b>	40.20	13.40	46.90	67.00

Extra chain £8.00

Chain oil, 2 stroke oil & files on sale

**Chain oil, 2 Stroke  
oil & Files on sale**



## Cordless Garden Tools

Item	Day	Ext D	W-End	Week
<b>Pole chain saw cordless (36v battery) inc P P Set</b>	44.40	14.80	51.80	74.00
<b>Chain saw 350mm cordless (36v battery) inc P P Set</b>	40.20	13.40	46.90	67.00
<b>Hedge trimmer 600mm cordless (36v battery)</b>	25.20	8.40	29.40	42.00

**Chains made  
to order in  
our workshop**





# Gardening

## Wood Chipper 160mm Tracked

**A tough machine for tough jobs! Large tracks and powerful track motors get this chipper into the most remote locations.**

Twin hydraulic rollers with Auto Feed Control, adjustable track width and fold away ride on platform.

Fuel	Diesel
Variable width tracks	0.81m to 1.3m
Length	3.56m
Height with funnel	2.21m
Max dia. infeed	160mm

Item	Day	Ext Day	W-End	Week
Wood chipper tracked (diesel)	164.50	70.00	199.50	350.00



## Shredder 160mm towable

**Towable shredder with a letterbox style feed.**

Can shred green materials, hedge trimmings, conifer, and shrubs with ease. Discharge chute rotates through 270 degrees.

Item	Day	Ext Day	W-End	Week
Shredder 160mm towable	108.00	54.00	135.00	270.00

Fuel	Petrol
Length	3.28m
Width	1.51m
Height with funnel	2.27m



**All prices shown are subject to VAT**

# Access Platforms

## Tracked Access Platform

**No scaffold required for those high and inaccessible jobs - Chimneys, gable ends, overhead lighting, conservatory and lean-to roofs, decorating and repairs.**

Can be used at 14 meters high by one person, & 12 metres high by 2 persons. The hydraulic widening system of the tracks assures a higher stability during transport on inclined surfaces. The reduced width dimensions allow it to fit through even the narrowest gaps, that until now were inaccessible with an aerial platform.



**Vertical Range** 12.6m - 14.0m  
**Horizontal Range** 5.6m - 7.0m

### Size in Transport

**Length** 3.98m  
**Height** 1.98m  
**Width** 0.78m/1.08m  
**Weight** 1700kg  
**Outrigger Footprint** 3m x 3m

Outrigger Pads  
available if  
required



Item	Day	Ext Day	W-End	Week
Tracked access platform	165.60	92.00	197.80	460.00
Petrol & Electric operated - Includes safety harness				



← 780mm →



← 1080mm →



← 5.60m - 7.00m →



← 3.975m →

↑ 1.98m ↓



↑ 12.60m - 14.00m ↓

← 3.00m →

# Access Platforms

## Niftylift HR12N

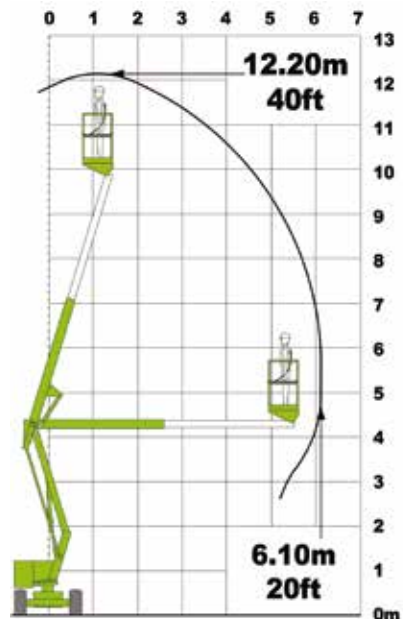
This self propelled boom lift is specifically designed to give maximum reach performance from the lightest, most compact base possible. A telescopic upper boom gives improved accuracy when positioning the platform and superb manoeuvrability makes it ideal for a wide range of applications.

With a 1.50m (4ft 11in) narrow chassis, it is ideal for working in factories, warehouses or anywhere that space is restricted. Its Bi-Energy option allows it to work for extended periods inside and outside, making it the perfect all-rounder.

Item	Day	Ext Day	W-End	Week
Hydraulic self propelled 2 man platform	130.00	52.00	156.00	260.00
Diesel & Battery operated - Includes safety harness				



Working Height	12.20m (40ft)
Platform Height	10.20m (33ft 6in)
Machine Length	4.10m (13ft 5in)
Machine Width	1.50m (4ft 11in)
Gradeability	25% (14°)
Min Weight	3100kg (6830lbs)
Safe Working Load	200kg (440lbs)
Working Outreach	6.10m (20ft)
Machine Height	1.90m (6ft 3in)
Travel Speed	3.4kph (2.1mph)
Turning Radius	4.20m (13ft 9in)
Cage Size	1.10m x 0.65m (3ft 7in x 2ft 2in)



All prices shown are subject to VAT



# Access Platforms

## Hydraulic 2 Man Platform

**This trailer mounted platform is specifically designed to give maximum reach performance from the most compact chassis possible.**

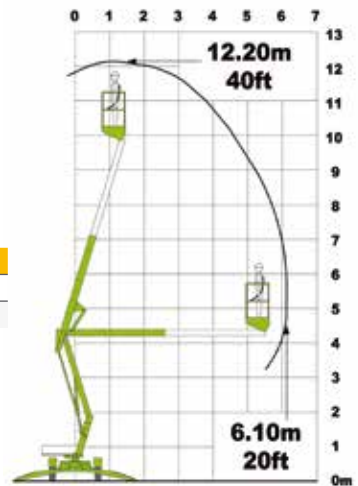
By utilising its versatile telescopic upper boom, it delivers unrivalled working outreach, especially at lower levels where it's needed most. Hydraulically operated outriggers make setting up both quick and easy.

Ideal for those high and inaccessible jobs - Chimneys, gable ends, overhead lighting, conservatory and lean-to roofs, decorating and repairs

Item	Day	Ext Day	W-End	Week
Hydraulic 2 man platform	90.00	50.00	107.50	250.00
Battery operated - Includes safety harness				

Max. Working Height	12.20m (40ft)
Max. Platform Height	10.20m (33ft 6in)
Machine Length	4.50m (14ft 9in)
Retracted Width	1.10m (3ft 7in)
Max. Outreach	6.10m
Safe Working Load	200kg (440lbs)
Working Outreach	6.10m (20ft)
Machine Height	1.90m (6ft 3in)
Machine Width	1.50m (4ft 11in)
Working Width	3.55m (11ft 8in)
Minimum Weight	1400kg (3100lbs)
Cage Size	1.10m x 0.65m (3ft 7in x 2ft 2in)
Outrigger Footprint	3.55m x 3.55m

Outrigger Pads available if required





# Access Platforms

## Self-Propelled Scissor Lift

**Ideal for outdoor and indoor use on firm, level surfaces, providing accessibility for a wide variety of applications. Will easily pass through standard single or double doors.**

Low-emission electric scissors deliver a quiet, convenient method for operation in sound-sensitive environments and zero inside turning radius offers excellent manoeuvrability in tight spaces.

### Operating Dimensions

**Max. Working Height** 7.79m (25ft)

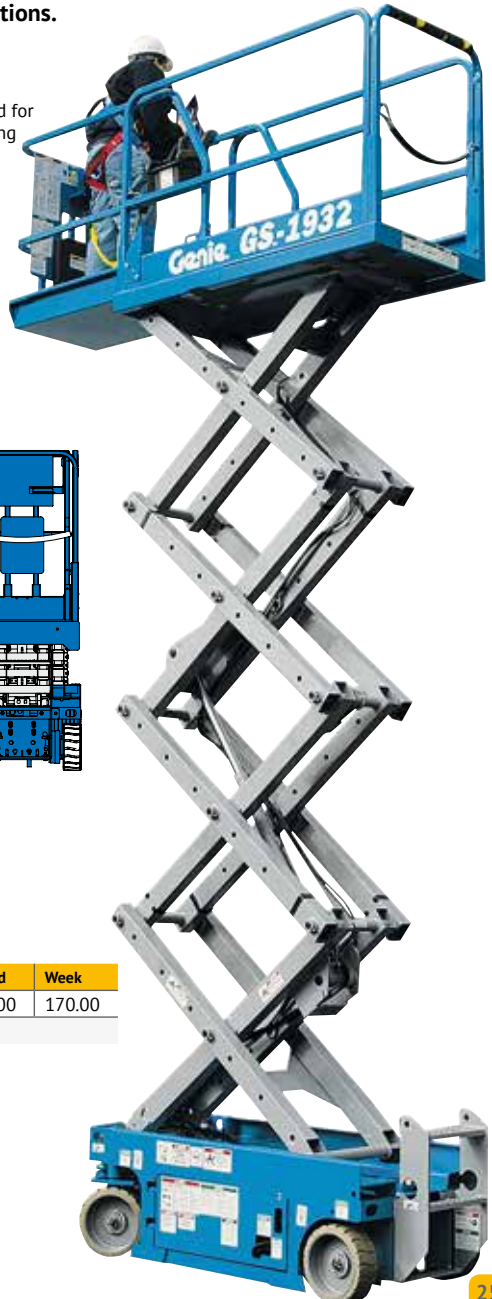
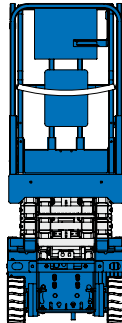
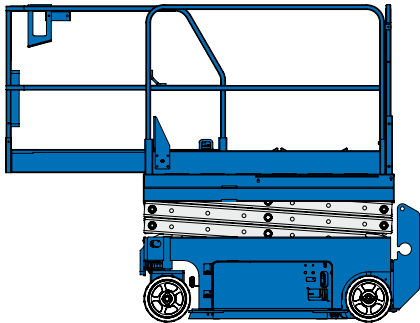
**Max. Platform Height** 5.79m (19ft)

**Height Stowed** 2.00m (6ft 7in)

**Platform Length Outside Extended** 2.54m (8ft 4in)

**Width** 0.813m (2ft 8in)

**Lift Capacity** 227kg



Item	Day	Ext Day	W-End	Week
Self-propelled scissor lift	85.00	34.00	102.00	170.00
Battery operated				

**All prices shown are subject to VAT**

# Lifting

## Material Lift

### Built for Handling Heavy Objects

Ideal For Lifting Beams, Ducting, Heaters etc.

- Easily Folds Away
- Loading Bar
- Roller Wheels
- Inside-Mast Cable Feed
- Sumner-built Winch
- 10" Rough Terrain Wheels
- Lockable 5" Casters
- Reversible Forks

**Max Lift Height**

15' 2" (4.6 m)

**Lifting Capacity**

800 lb (360 kg)

**Weight** 150kg



Item	Day	Ext Day	W-End	Week
Material lift	52.00	20.80	62.40	104.00

## Plaster Board Lifter

### Plasterboard Lifter for raising & positioning boards & panels, fully tilting on both axis

- Wheel mounted board lifter
- Maximum 75kg lift
- Up to 3.5 metres lift height
- Tilting head adjustable to 45°
- Weight 38kg

Allows one man to position and fix ceiling boards and panels. Frame dismantles and the wheels fold flat for transport.



Item	Day	Ext Day	W-End	Week
Plaster board lifter	26.40	9.60	31.20	48.00

# Mini Excavators

## Mini Excavator 8000kg - 360° Slew

**Tracked 360° slew mini excavator with quick hitch bucket system.**

Machines are supplied with a full set of buckets.

**Fuel and  
delivery extra**



Item	Day	Ext Day	W-End	Week
Mini excavator 8000kg 360 slew	125.13	125.13	213.85	455.00

Rubber tracks & cabin	
Buckets	
18" / 450mm	
24" / 600mm	
36" / 900mm	
72" / 1800mm Grading	
Max height	2.54m
Width	2.2m
Max dig	4.6m
Max dig radius	7.17m
Max dump height	5.25m



**All prices shown are subject to VAT**



# Mini Excavators



## Mini Excavator 5100kg - 360° Slew

**Tracked 360° slew mini excavator with quick hitch bucket system.**

Machines are supplied with a full set of buckets.

**Fuel and  
delivery extra**



### Zero Tail Swing Version

Rubber tracks & cabin	
Buckets	
12" / 300mm	
24" / 600mm	
36" / 900mm	
60" / 1500mm Grading	
Max height	2.55m
Width	1.96m
Max dig	3.63m
Max dig radius	6.105m
Max dump height	4.005m

### Standard Version

Rubber tracks & cabin	
Buckets	
12" / 300mm	
18" / 450mm	
24" / 600mm	
36" / 900mm	
60" / 1500mm Grading	
Max height	2.54m
Width	1.96m
Max dig	3.855m
Max dig radius	6.155m
Max dump height	4.130m

Item	Day	Ext Day	W-End	Week
Mini excavator 5100kg 360 slew	104.50	104.50	178.60	380.00
Mounted hammer	60.00	30.00	75.00	150.00

# Mini Excavators

## Mini Excavator 2750kg - 360° Slew

**Tracked 360° slew mini excavator with quick hitch bucket system.**

Machines are supplied with a full set of buckets.

**Fuel and  
delivery extra**

Rubber tracks & cabin	
Buckets	
12" / 300mm	
18" / 450mm	
24" / 600mm	
36" / 900mm grading	
Max height	2.44m
Width	1.40m
Max dig	2.725m
Max dig radius	4.665m
Max dump height	3.285m



**All prices shown are subject to VAT**

Item	Day	Ext Day	W-End	Week
Mini excavator 2750kg 360 slew	82.50	82.50	141.00	300.00

## Mini Excavator 1500kg - 360° Slew

**Tracked 360° slew mini excavator with quick hitch bucket system.**

Machines are supplied with a full set of buckets.

**Fuel and  
delivery extra**

Item	Day	Ext Day	W-End	Week
Mini excavator 1500kg 360 slew	60.50	60.50	103.40	220.00
Mounted hammer	40.00	20.00	50.00	100.00
Mounted stump grinder	44.00	22.00	55.00	110.00
Mounted auger - 250mm	32.00	16.00	40.00	80.00

Rubber tracks & canopy	
Buckets	
12" / 300mm	
18" / 450mm	
24" / 600mm	
30" / 760mm grading	
Max height	2.315m
Width	1.00m
Max dig	2.335m
Max dig radius	3.895m
Max dump height	2.55m



# Mini Excavators

## Micro Excavator 1000kg - 360° Slew

**Tracked 360° slew micro excavator with quick hitch bucket system.**

Machines are supplied with a full set of buckets.

**Fuel and  
delivery extra**

Rubber tracks & roll bar	
Buckets	
12" / 300mm	
18" / 450mm	
24" / 600mm	
30" / 760mm grading	
Max height	2.055m
Min height	1.30m
Width	0.7m to 0.86m expanded
Max dig	1.705m
Max dump height	2.020m



Item	Day	Ext Day	W-End	Week
Micro excavator 875kg 360 slew	60.50	60.50	103.40	220.00

## Mounted Accessories for Excavators

See pages 28-29



**Mounted Hammer**



**Mounted Stump Grinder**



**Mounted Auger**



# Loaders

## Toro TX525

### Narrow rubber tracked loading shovel with attachable equipment as listed.

Ideal for confined and limited access sites. Easy to Operate - two simple controls operate all traction and loader functions. Comes with 88cm wide bucket (99 litres) as standard.

Fuel and delivery extra



Toro with Bucket

Item	Day	Ext Day	W-End	Week
<b>Toro with bucket</b>	80.00	40.00	100	200
Toro attachments				
Trencher	45.00	18.00	54.00	90.00
Auger	35.00	14.00	42.00	70.00
Cultivator	45.00	18.00	54.00	90.00

### High-Torque Trencher

High-torque, heavy-duty drive system guarantees performance in any soil condition. Dig trenches up to 107cm below surface level.

### Universal Swivel Auger

Perfect for installing fences. Ensures 'plumb' holes on uneven terrain

### Soil Cultivator

Prepares a seed bed in one pass. Easily tills soil up to 14cm deep. Adjustable grading bar and comb teeth 'fluff' the soil, leaving the perfect germination environment for fresh seed or turf. Bury stones, soil clumps, debris and grass. Working width: 91cm.

Fuel	Diesel
Width	0.88m
Height	1.17m
Auger widths	0.25m, 0.35m
Trencher width	0.15m
Trencher depth	up to 1.07m
Cultivator working width	0.91m



Swivel Auger



Soil Cultivator



Trencher

All prices shown are subject to VAT

# Loaders

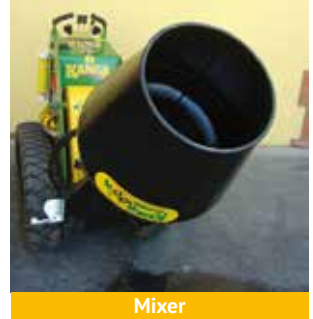
## Kanga Kid 216

**Narrow rubber tracked loading shovel with attachable equipment as listed.**

Ideal for confined and limited access sites



4 in 1 Bucket



Mixer



Auger

Item	Day	Ext Day	W-End	Week
<b>Kanga kid 216 + 4 in 1 bucket</b>	49.50	49.50	85.50	180.00
<b>Kanga attachments</b>				
Trencher	35.00	14.00	42.00	70.00
Auger	30.00	12.00	36.00	60.00
Auger bit / Mixer *	8.00	3.20	9.60	16.00
Rotavator	25.00	10.00	30.00	50.00

\* Please note, mixer requires Auger drive unit

Fuel	Petrol
Width	0.80m
Height	1.20m
Max dump height	1.185m
Auger	200mm - 300mm
Trencher width	100mm
Trencher depth	500mm



Trencher



Rotavator

# Loaders

## Compact Telehandler 4x4

**Compact machine with small turning radius perfect for small sites.**  
Will lift to a height of 3.99m with it's telescopic boom.



**Fuel and delivery extra**

Item	Day	Ext Day	W-End	Week
<b>Compact telehandler 4x4</b>	82.50	82.50	141.00	300.00
Supplied with pallet forks & front bucket (1.5m wide, 330l)				

Fuel	Diesel
Capacity	1,350kg
Weight	2,400kg
Lifting height	3.99m
Turning radius	2.98m
Width	1.41m
Length	3.66m
Height	1.94m

## Skid Steer Loaders

**Ideal for farm work clearing manure or building sites moving sand and aggregates in very confines spaces.**

Item	Day	Ext Day	W-End	Week
<b>Bobcat S100 +bucket</b>	83.33	83.33	117.50	250.00
Fork & grapple	7.33	7.33	10.34	22.00

**Cleaning, Fuel and delivery extra**

Fuel	Diesel
Model	S100
Weight	1483kg
Width	1.22m
Height	1.83m
Max dump height	2.40m



**All prices shown are subject to VAT**



# Dumpers and Barrows

Fuel and  
delivery extra



2 Tonne Swivel Skip

## 2, 3 & 6 Tonne Dumpers

Item	Day	Ext Day	W-End	Week
Dumper 2 ton swivel skip width 1.48m (diesel)	50.00	25.00	62.50	125.00
Dumper 3 ton swivel skip width 1.90m (diesel)	75.00	30.00	90.00	150.00
Dumper 6 ton width 2.13m (diesel)	85.00	34.00	102.00	170.00

## 1 & 1.5 Tonne Dumpers 4wd Hi-tip

Item	Day	Ext Day	W-End	Week
Dumper 1 ton 4wd hi-tip width 1.13m, dump height: 1.9m (diesel)	52.20	29.00	62.35	145.00
Dumper 1.5 ton 4wd hi-tip width 1.3m, dump height: 1.9m (diesel)	54.00	30.00	64.50	150.00

All prices shown are subject to VAT

# Dumpers and Barrows

Fuel and  
delivery extra



1 Tonne 4wd Hi-tip

## Tracked 1 & 0.65 Tonne Hi-tip

Item	Day	Ext Day	W-End	Week
Tracked 0.65 ton hi-tip width 0.70m, dump height: 1.4m (petrol)	50.00	20.00	60.00	100.00
Tracked 1.0 ton hi-tip width 0.75m, dump height: 1.3m (petrol)	55.00	22.00	66.00	110.00

Delivery extra



# Portable Conveyor

## Shifta 4.5m Conveyor

**This is a portable conveyor for rubble, aggregate, soils etc.**

Lightweight aluminium construction, easily manoeuvred by 1 man, 2 speed motor, deep troughed chevron belt, large hopper for bulk loading. Any load, any distance, up to 45 degrees incline.



Item	Day	Ext Day	W-End	Week
Shifta 4.5m conveyor	65.00	26.00	78.00	130.00
Electric 110v				

**All prices shown are subject to VAT**





**Fowlers are an official Stihl & Viking agent, stocking a huge range of petrol, electric and cordless machines, for professional and home use.**

From chainsaws to ride-on mowers, hedge trimmers to stone saws. We also stock a large range of accessories, consumables and spares.



**We are Stihl / Viking warranty repair agents and carry out repairs in our own workshop**



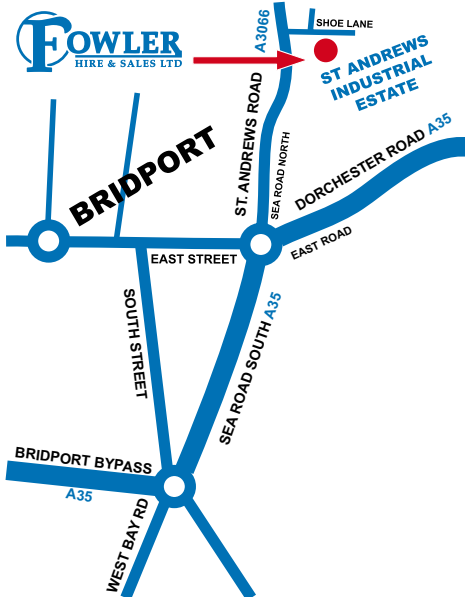


# BOSCH

Intelligent Measuring at

**FOWLER**  
HIRE & SALES LTD





## How to find us!

Fowler Hire & Sales Ltd is situated on St Andrews Industrial Estate, just off the A3066, Bridport to Beaminster road.

## We can come to you!

Our vehicle travels through your area. We also collect power tools for repair, plus blades and steels for sharpening.

Call Ian on: 01308 424269  
or Mobile: 07891 446318

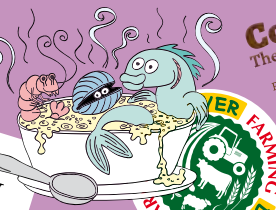


We also have many special offers and ex-demo items available to buy direct or on ebay  
Click the links from our website [www.fowlertools.co.uk](http://www.fowlertools.co.uk)  
or visit [www.ebay.co.uk/usr/fowlerhire](http://www.ebay.co.uk/usr/fowlerhire)



## FOWLER DESIGN

Logo Design • Design for Print • Website Design • Vehicle & Display Graphics  
Mobile: 07854 706929 Email: [paul@fowlerdesign.co.uk](mailto:paul@fowlerdesign.co.uk)  
[www.fowlerdesign.co.uk](http://www.fowlerdesign.co.uk)







**Garden Machinery - Large Range Now In Stock**



We stock a full range of Stihl and Viking machines, petrol, electric & battery, and are approved warranty agents. Our trained staff work closely with Stihl /Viking to be able to advise you on the most suitable machine for your requirements. All repairs are carried out in our workshops.

**You can shop in our spacious showrooms at**

**St. Andrew's Industrial Estate, Bridport, Dorset DT6 3EX**

**We have a large range of power tools and equipment in stock**



**OPENING HOURS: Monday to Friday: 7.30am - 5.30pm, Saturday: 8.00am - 12.30pm only**  
**St. Andrew's Industrial Estate, Bridport, Dorset | email: [sales@fowlertools.co.uk](mailto:sales@fowlertools.co.uk)**